



## Alexis Thompson named Associate Director for Health Disparities and Special Population Initiatives

Alexis Thompson, MD, MPH, has been named Associate Director for Health Disparities and Special Population Initiatives at the Lurie Cancer Center. In this new senior leadership position, Dr. Thompson will strengthen the community outreach and service programs of the Office of Health Disparities and Special Population Initiatives (HDSPI) and enhance the efforts of Shaan Trotter, MS, who serves as HDSPI's administrative director.

Dr. Thompson is currently the Medical and Scientific Director of Hematology at Children's Memorial Hospital and Associate Professor of Pediatrics at the Northwestern University Feinberg School of Medicine.

(continued on page 7)



## 15th Annual Cancer Survivors' Celebration & Walk to be held on Sunday, June 1st (National Cancer Survivors Day)

If the Cancer Survivors' Celebration & Walk is approaching, summer can't be far away. Sunday, June 1, 2008 marks the 15th anniversary of the Lurie Cancer Center's salute to cancer survivors and the strides made in cancer treatment and research.

The leisurely four-mile, non-competitive walk celebrates survivors and all those whose lives have been touched by cancer, as well as the physicians, scientists and health professionals who work on their behalf. The festivities are held in Grant Park at the corner of Columbus and Balbo Drives, with the walk stepping off at 9 a.m. and continuing along Chicago's lakefront.

The family friendly event includes an opportunity to sign the Dedication Wall, a picnic lunch, music, entertainment and more. No pledges are required. The \$15



registration fee covers a t-shirt, refreshments and all the fun.

Registration is \$20 on Walk day. Children in strollers are admitted free. Registration is available online until May 30th at [cancer.northwestern.edu/walk](http://cancer.northwestern.edu/walk).

For additional information call 312.695.1304.

Check your member profile on the Cancer Center Website at:

[www.cancer.northwestern.edu](http://www.cancer.northwestern.edu)



### INSIDE THIS ISSUE:

- Cancer Survivors' Celebration & Walk - 1
- Lurie Cancer Center News - 2
- Professional Programs & Patient Events - 3
- Awards and Honors - 4
- Tumor Cell Biology Seminars - 5
- Grand Rounds - 6
- New Members and Staff - 7

# Cancer Center News and Notes

## Chicago City Council Approves Plans for Ann & Robert H. Lurie Children's Hospital of Chicago, Including Heliport

The City Council approved plans for the Ann & Robert H. Lurie Children's Hospital of Chicago to be located in Northwestern's Chicago Campus. Named in recognition of philanthropist Ann Lurie's \$100 million gift, the hospital is scheduled to break ground this spring and open in 2012 pending government approval.

"This is a historic day for our institution and the community as we take one step closer toward a new facility that will enable us to continue to provide top quality health care for children of our region for generations to come," said Patrick Magoon, the hospital's President and CEO. Children's Memorial must turn away a significant number of critically ill children each year because an appropriate bed is not available. The new facility, located on the campus of its partner medical school, Northwestern University's Feinberg School of Medicine, will help Children's Memorial to continue to recruit and retain top physicians and scientists. Its adjacency to Northwestern Memorial's new Prentice Women's Hospital will offer convenience for families and direct clinical interaction to benefit newborns. Proximity to the Rehabilitation Institute of Chicago and Northwestern Memorial Hospital will improve transitional care for children with chronic illnesses into adult care.

The City Council's approval includes the permitted use of a rooftop heliport at the Ann & Robert H. Lurie Children's Hospital of Chicago. An average of 73 critically ill and injured children are transported to Children's Memorial by helicopter each year when clinicians deem it a medical necessity and pilots determine that conditions are safe for flight. The hospital has operated a rooftop heliport at its Lincoln Park facility for 20 years and has engaged in extensive studies with top experts to ensure that the new heliport will be safe.

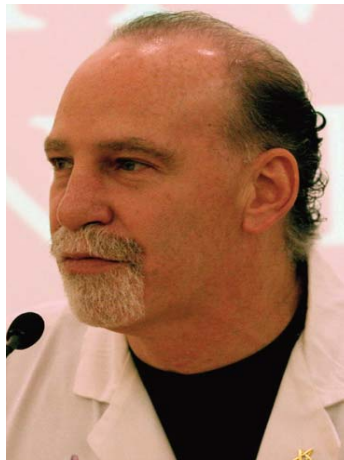


## Steven Rosen, MD, named Editor-in-Chief of Oncology News International

Steven Rosen, MD, FACP, Genevieve Teuton Professor of Medicine at the Feinberg School of Medicine and Director of the Robert H. Lurie Comprehensive Cancer Center of Northwestern University has accepted the position of Editor-in-Chief for *Oncology News International*.

"I am very proud to follow in the footsteps of my dear friend and mentor Marty Abeloff, a great role model for all oncologists," Dr. Rosen said. "I hope to sustain the high quality of the journal and seek the guidance of our readership to ensure that the most important issues affecting our field are communicated in a timely and scholarly manner." Dr. Abeloff, who died last year, was the Director of the Johns Hopkins Kimmel Cancer Center, served as Editor-in-Chief of *Oncology News International* from its inception in 1982.

(continued on page 8)



## Ann Lurie Donates \$600,000 to Buy DNA Sequencer

Ann Lurie, a major benefactor of medical research and facilities at Northwestern, has donated \$600,000 to the Robert H. Lurie Comprehensive Cancer Center of Northwestern University and Northwestern's Center for Genetic Medicine to purchase a state-of-the-art next generation DNA sequencer.

The sequencer will enable scientists to quickly read enormous regions of DNA for research into genetic mutations and variations that are involved in the development of disease. The machine can be used to read large parts of the human genome or entire genomes of bacteria and viruses. This information will become useful for choosing optimal therapies in patients with cancer.

The new machine, called an Applied Biosystems Solid State DNA Sequencer, can sequence 3,000 million base pairs in a single analysis. Base pairs are the building blocks of DNA. A traditional sequencer reads from 60 to 600 DNA base pairs in a single analysis.

# Professional Programs & Patient Events

Throughout the year the Robert H. Lurie Comprehensive Cancer Center of Northwestern University offers Continuing Medical Education (CME) programs on various cancer specialties. Below is a list of programs scheduled for the remainder of 2008. For specific dates or more information about these programs, visit [cancer.northwestern.edu/education](http://cancer.northwestern.edu/education) or call 312.695.1304.

## Professional Programs

### 2007 ASH Review

March 7, 2008  
Prentice Women's Hospital  
Chairs: Leo Gordon, MD, Seema Singhal, MD and Martin Tallman, MD

### FSM Alumni Conference

April 25, 2008  
Chair: Steven Rosen, MD

### 5th International Chicago Lymphoma Symposium

Lurie Medical Research Center  
April 26, 2008  
Chairs: Andrew Evens, DO and Sonali Smith, MD  
[cancer.northwestern.edu/lymphoma](http://cancer.northwestern.edu/lymphoma)

### H Foundation Annual Basic Science Symposium

Evanston Campus  
May 14, 2008  
Chairs: Richard Carthew, PhD, Erik Sontheimer, PhD and Tom Volpe, PhD  
[cancer.northwestern.edu/bss](http://cancer.northwestern.edu/bss)

### Distinguished Lecturer

Lurie Medical Research Center  
June 3, 2008  
Michelle LeBeau, PhD

### Scientific Poster Session (Posters and Wine)

Lurie Medical Research Center  
June 25, 2008  
[cancer.northwestern.edu/posters](http://cancer.northwestern.edu/posters)

### ASCO Review

Northwestern Memorial Hospital  
Mecklenburg Conference Room  
June 27, 2008

### Onco-Biotechnology Summit

Lurie Medical Research Center  
July 24-25, 2008  
[cancer.northwestern.edu/onco-biotechnology](http://cancer.northwestern.edu/onco-biotechnology)

### 10th Annual Lynn Sage Breast Cancer Symposium

The Fairmont Hotel, Chicago  
October 23-26, 2008  
Chair: William Gradishar, MD  
[lynnsagebreastcancer.org](http://lynnsagebreastcancer.org)

### 12th International Conference on Differentiation Therapy and Innovative Therapeutics in Oncology

November 1-4, 2008  
Chairs: Jonathan Licht, MD and Martin Tallman, MD

### Berlin Lecture

November 11, 2008  
Timothy Rebbeck, PhD

### 11th Annual Oncology Nursing Conference

December 2008  
[cancer.northwestern.edu/nursing](http://cancer.northwestern.edu/nursing)

---

## Patient Programs and Events

The Lurie Cancer Center is committed to educating the public about cancer prevention and treatment, and offers a wide range of community events and patient programs throughout the year. For more information about these programs, visit [cancer.northwestern.edu/events](http://cancer.northwestern.edu/events) or call 312.695.1304

### Monthly Cancer Support & Advocacy Information Fairs

*Galter Pavillion, 21st Floor - 11 am to 2 pm*  
March 12, 2008 - Featured topic: Colorectal cancers  
April 3, 2008 - Featured topic: Oral, Head and Neck and Thyroid  
May 15, 2008 - Featured topic: Survivorship  
June 9, 2008 - Featured topic: Prostate Cancer  
July 9, 2008 - Featured topic: Pancreatic Cancer

### CTCL Public Education Symposium

March 5, 2008 - Chair: Steven Rosen, MD  
[cancer.northwestern.edu/CTCL](http://cancer.northwestern.edu/CTCL)

### Thyroid Cancer Public Education Symposium

April 22, 2008 - Chair: Peter Kopp, MD  
[cancer.northwestern.edu/thyroid](http://cancer.northwestern.edu/thyroid)

### 15th Annual Cancer Survivors' Celebration & Walk

Grant Park  
June 1, 2008  
[cancer.northwestern.edu/walk](http://cancer.northwestern.edu/walk)

### Lynn Sage Breast Cancer Town Hall Meeting

Fairmont Hotel, Chicago  
October 26, 2008 - Chair: William Gradishar, MD  
[cancer.northwestern.edu/townhall](http://cancer.northwestern.edu/townhall)

# Awards and Honors

Northwestern University has been awarded a \$6.25 million grant from the Leukemia & Lymphoma Society to investigate blood cancers and find new ways to treat them. **Jonathan D. Licht, M.D.**, Johanna Dobe Professor and Chief of the Division of Hematology and Oncology at Northwestern University's Feinberg School of Medicine, will lead the Consortium for the Study of Chromatin Biology and Epigenetic Targeting in Hematological Malignancies. The consortium is one of only three research groups around the country to be awarded the new Marshall A. Lichtman Specialized Center of Research grant offered by the Leukemia & Lymphoma Society. Each group will receive \$1.25 million per year for the next five years.

The V Foundation for Cancer Research named **Dean Ho, PhD** as a 2007 V Foundation Scholar for his research of "Active Nanodiamond Hydrogels for Directed Chemotherapeutic Delivery."

**Steven T. Rosen, MD** and **June M. McKoy, MD** were elected to the Board of Directors of the Illinois Division of the American Cancer Society.

Three caregivers at Northwestern Memorial Hospital received the prestigious "Compassionate Care Award in the Cancer Program," an acknowledgment given annually to caregivers who exemplify and serve as role models for the humanistic and compassionate care of cancer patients. One recipient is selected from each of the following categories: attending physician, resident or fellow, nursing and allied health professionals. This year's recipients who were honored at a ceremony in January are: surgical oncologist **Jeffrey D. Wayne, MD, FACS**, medical oncology / palliative care fellow **Tara Sanft, MD** and staff educator, hematology & stem cell transplant, **Sarah Witt, RN, BSN**.

**Paul J. Grippo, PhD**, received the 2007-2009 Nancy Daly Riordan PanCAN-AACR Career Development Award for Pancreatic Cancer Research. The funds that accompany the award will support research to determine if a common genetic mutation in pancreatic cancer (in a gene called Kras) is required for the development and maintenance of both early precancerous lesions (PanINs) and cancer.

The following proposals were selected for funding (\$20,000 for one year) by the Lurie Cancer Center's American Cancer Society-Institutional Research Grant:

**Chonghui Cheng, MD, PhD** - Role of Aberrant Alternative Splicing in Cancer

**Jacqueline Jeruss, MD** - The Oncogenic Relationship Between Smad 3 and Cyclin Dependent Kinases in Breast Cancer

**Jennifer Koblinski, PhD** - The role of JUN, tenascin-C, and early growth response-1 in breast cancer metastasis to the brain

**David Bentrem, MD** - Quality measures in cancer surgery

The **Lurie Cancer Center** received \$310,000 from the H Foundation to support basic science research. Over the past six years, the foundation—comprising a volunteer group of LaGrange-based business owners and friends—has donated more than \$1.4 million in philanthropic support, enabling the Lurie Cancer Center to award "bridge" funding and incentive grants to scientists pursuing highly innovative cancer studies.



# Tumor Cell Biology Seminars

Robert H. Lurie Medical Research Center, Baldwin Auditorium, 303 East Superior, Chicago, IL  
Thursdays - 1:00 pm to 2:00 pm

- March 6 Of Growth Factors, Nutrients, mTOR Complex 1 and Cancer**  
Sara Kozma, PhD, Associate Professor  
University of Cincinnati, Cincinnati, OH  
Host: Leon Platanius, MD, PhD
- March 13 Student Lecture: ICSBP Haplo-Insufficiency Synergizes with SHP2-Activation For Apoptosis Resistance and Cytokine Hypersensitivity in Meloid Progenitors**  
Iwona Konieczna, PhD Student, Division of Hematology/Oncology  
Northwestern University, Feinberg School of Medicine, Chicago, IL
- March 20 GABP Transcription Factor is a Key Regulator of Myeloid Cell Development and the Cell Cycle**  
Alan G. Rosmarin, MD, Gladys Smith Martin Professor of Oncology  
Chief, Division of Hematology/Oncology  
University of Massachusetts Medical School, Worcester, MA  
Host: Jonathan Licht, MD
- March 27 Signature-based Approaches to Small Molecule Discovery for Cancer**  
Kimberly Stegmaier, MD, Assistant Professor, Department of Pediatrics  
Dana Farber Cancer Institute, Boston, MA  
Host: Jonathan Licht, MD
- April 10 Student Lecture: The Desmosomal Cadherin Desmoglein 1 Regulates Human Epidermal Differentiation and Morphogenesis via Adhesion Dependent and independent Mechanisms**  
Corey Simpson, Graduate Student, Departments of Pathology and Dermatology  
Northwestern University, Feinberg School of Medicine, Chicago, IL
- April 17 Probing the Onset and Regulation of Erythroid Cell Specific Gene Expression**  
James J Bieker, PhD, Professor, Department of Development and Regenerative Biology  
Mt. Sinai School of Medicine, New York, NY  
Host: John Crispino, PhD
- April 24 Student Lecture: TBA**  
Jessica Reimer  
Northwestern University, Feinberg School of Medicine - Chicago, IL
- May 1 Discovery of Bcl-2 Family Inhibitors for the Treatment of Cancer**  
Stephen Fesik, PhD, Divisional VP Cancer Research, Global Pharmaceutical Research & Development  
Abbott, Abbott Park, IL  
Host: John Crispino, PhD
- May 8 Cancer Cell DNA Replication: Implications for Biomarker and Molecular Target Discovery**  
Linda Malkas, MD, Professor, Medicine  
Indiana University, Indianapolis, IN  
Host: Leon Platanius, MD, PhD
- May 15 Student Lecture: TBA**  
Terry Fitzpatrick  
Northwestern University, Feinberg School of Medicine - Chicago, IL

**Accreditation Statement:** Northwestern University's Feinberg School of Medicine is accredited by the Accreditation Council for Continuing Medical Education to provide continuing medical education for physicians.

**Credit Designation Statement:** The Northwestern University's Feinberg School of Medicine designates this educational activity for a maximum of 1.0 AMA PRA Category 1 Credit(s)<sup>™</sup>. Physicians should only claim credit commensurate with the extent of their participation in the activity.

# Grand Rounds

Grand Rounds are on Fridays from 8 am to 9 am in the Gray Seminar Room of the Lurie Research Medical Center, 303 E. Superior, Chicago, IL (unless otherwise noted). Contact Denise Marshall at 312.695.1392 or [d-marshall4@northwestern.edu](mailto:d-marshall4@northwestern.edu).

- March 7**     **The Role of Palliative Sedation in the Care of Cancer Patients**  
Janet Abraham, PhD, Division of Adult Psychosocial Oncology - Dana Farber Cancer Institute, Boston MA
- March 14**    **Thyroid Cancer Beyond Radioiodine: What to Target and When to do It**  
James A. Fagin, MD, Chief, Endocrinology Service - Memorial Sloan-Kettering Cancer Center, New York, NY  
Host: Peter Kopp, MD
- March 21**    **Making Sense of What We Have-Treatment Strategies and Trial Designs in Advanced Colorectal Cancer**  
Axel Grothey, MD, Attending, Mayo Clinic - Rochester, MN
- March 28**    **Special Grand Rounds in Honor of Dr. David Green**  
Nigel Key, MD, ChB, FRCP - Robert Montgomery, MD - Gerald Soff, MD  
Host: Anaadriana Zakarija, MD  
\* Please note: event will be held in the Baldwin Auditorium
- April 4**     **Role of JAK-STAT Singaling in Myeloproliferative Disorders**  
Ross Levine, MD, Attending - Memorial Sloan-Kettering Cancer Center, New York, NY  
Host: John Crispino, PhD
- April 11**    **Cerebral Cavernous Angiomas: Malformations or Tumors**  
Issam A. Awad, MD, MSc, FACS, MA (hon), Professor and Vice-chairman  
Department of Neurological Surgery - Northwestern University, Evanston, IL
- April 18**    **TBA**  
Charles Schiffer, MD, Professor of Medicine and Oncology and Leader of Leukemia/Lymphoma Group  
Barbara Ann Karmanos Cancer Institute - Detroit, MI  
Host: Martin Tallman, MD
- April 25**    **Changes in the Management of Follicular Lymphoma in the Rituximab Era**  
James Friedberg, MD, Associate Professor, Department of Hematology/Oncology  
University of Rochester Medical Center, Rochester, MN
- May 2**     **GM-CSF Secreting Leukemia Cell (GVAX) Vaccinations After Allogeneic Stem Cell Transplantation for Advanced Myeloid Malignancies -**  
Vincent Trien-Vinh Ho, MD, Instructor, Department of Adult Oncology  
Dana-Farber Cancer Institute, Boston, MA  
Host: Hau Kwaan, MD, PhD
- May 9**     **Oncology Training Group**  
Host: Robin Leikin, PhD
- May 16**    **Cancer and Thrombosis-Epiphenomenon or Oncogenic Relationship?**  
Frederick Rickles, MD, FACP, Clinical Professor of Medicine, Division of Hematology/Oncology  
The George Washington University School of Medicine and Health Sciences  
Host: Hau Kwaan, MD, PhD
- May 23**    **The Expanding Role of Chemotherapy and Targeted Therapies for High Grade Gliomas**  
Warren Mason, MD, Division of Neurology - Princess Margaret Hospital, Toronto, Ontario Canada  
Host: Jeffrey Raizer, MD

**Accreditation Statement:** Northwestern University's Feinberg School of Medicine is accredited by the Accreditation Council for Continuing Medical Education to provide continuing medical education for physicians.

**Credit Designation Statement:** The Northwestern University's Feinberg School of Medicine designates this educational activity for a maximum of 1.0 AMA PRA Category 1 Credit(s)<sup>™</sup>. Physicians should only claim credit commensurate with the extent of their participation in the activity.

# Cancer Center Appoints New Members

Steven T. Rosen, MD, FACP, Director of the Robert H. Lurie Comprehensive Cancer Center of Northwestern University, announces the following full member appointments:

**Jessica Altman, MD**, is an assistant professor in the Department of Medicine, Feinberg School of Medicine. Her primary research interest is the study and treatment of hematologic malignancies. Her laboratory efforts are focused on the understanding of signal transduction and specifically the mTOR pathway in acute myeloid leukemia. Her office is in the Robert H. Lurie Medical Research Center, 303 E. Superior St, 5-111, Chicago.



Contact Dr. Altman at 312.503.1817 or [j-altman@northwestern.edu](mailto:j-altman@northwestern.edu)



**Spiro Getsios, PhD**, is an assistant professor in the Department of Dermatology, Feinberg School of Medicine. His lab studies the relationship between cell adhesion and signaling pathways in order to understand how normal epithelial cells receive and respond to contextual cues in intact tissues. His office is in Ward, 303 E. Chicago Avenue., 9-332, Chicago.

Contact Dr. Getsios at 312.503.4137 or [s-getsios@northwestern.edu](mailto:s-getsios@northwestern.edu)

**Mary Beth Madonna, MD**, is an assistant professor in the Department of Surgery, Feinberg School of Medicine. Her research is focused on growth factor pathway effects on neuroblastoma behavior (both EGF and NGF). Specific interests include the factors that make neuroblastoma cells resistant to stress, specifically chemotherapeutic induced stress. Her office is in Children's Memorial Hospital, 2300 Children's Plaza, Chicago.



Contact Dr. Madonna at 773.880.4422 or [mmadonna@childrensmemorial.org](mailto:mmadonna@childrensmemorial.org)

(Thompson named Associate Director- from page 1)  
Her clinical interests include hemoglobinopathies, bone marrow failure syndromes, and stem cell transplantation in pediatric patients. Her laboratory research is focused on developmentally regulated genes in early hematopoiesis.

In 2001, Dr. Thompson was named the A. Watson and Sarah Armour Endowed Chair for Blood Diseases and Cancer at Children's Memorial Hospital. She has served on the Board of Directors for the National Marrow Donor Program (NMDP), and is currently on the Medical Advisory Boards for the Cooley's Anemia Foundation and the Sickle Cell Disease Association of Illinois. In her current position, Dr. Thompson is an investigator on NIH-funded multi-center clinical trials as well as her own institutional clinical studies in thalassemia, sickle cell disease and hemophilia.

(Rosen named Editor-in-Chief of ONI - from page 2)

Dr. Rosen has worked with Oncology News International in the past as an editorial advisor and is lead author of the non-Hodgkins Lymphoma chapter of the *Cancer Management Handbook*, a publication of the group that produces *Oncology News International*.

"We're extremely pleased to have Dr. Rosen on board as Editor-in-Chief," said John C. Hayes, editorial director. "He brings a level of energy, knowledge and experience that will be of tremendous value to Oncology News International and its readers."

# w e l c o m e



# s t a f f

Derek Davis  
Program Assistant  
Administration

Kristen Lehner  
Research Financial Analyst  
Clinical Research Office

Xiaoyan Liang  
Research Technologist  
Monoclonal Facility

Allen McMillen  
Protocol Coordinator  
Clinical Research Office

Shradda Shrestha  
Senior Research Study Program Coordinator  
PathCore Quality Assurance

Bill Stuart  
Coordinator, Clinical Research  
Clinical Research Office

## Robert H. Lurie Comprehensive Cancer Center News

### Office of Public Affairs and Communications

676 N. St. Clair, Suite 1200 - Chicago, IL 60611 - 312.695.1304

#### Director

Steven T. Rosen, MD, FACP

#### Managing Editor

Jennifer Bowker

#### Director, Public Affairs and Communications

Sharon Markman

#### Design

Michael Miller

#### Editorial Advisor

Tim Volpe

Send news and events to the editor:  
[j-bowker@northwestern.edu](mailto:j-bowker@northwestern.edu) or 312.695.0502

### Lurie Cancer Center Weekly Updates

Information to be considered for inclusion in the Cancer Center's weekly e-mail updates must be received at least one week in advance. Submit suggestions to Denise Marshall at [d-marhsall4@northwestern.edu](mailto:d-marhsall4@northwestern.edu).